

Video Detectors Linearity Testing

Hristo Pavlov

Lucky Star Kick-Off Meeting Workshop, Paris, 18-19 Apr 2016

Many Cameras – Little Testing



Flea3



Grasshopper



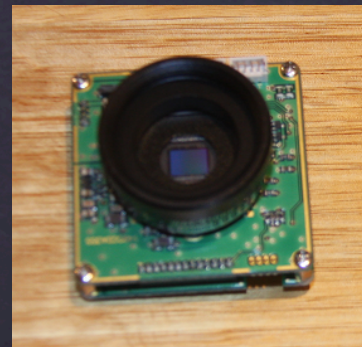
G-Star



WAT-120N+



WAT-902H



WAT-910BD



Mallincam

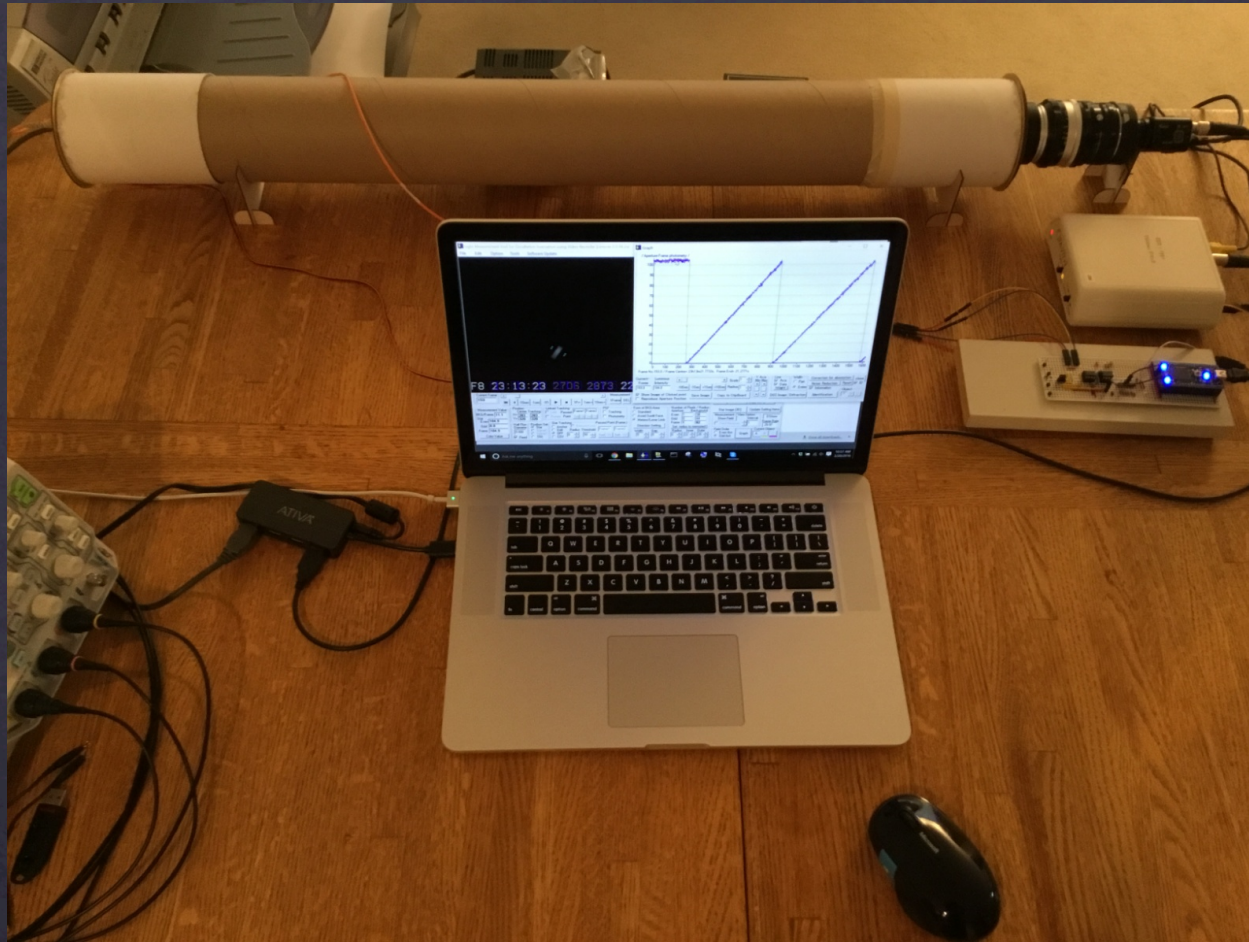


PC164-Ex2



WAT-910HX

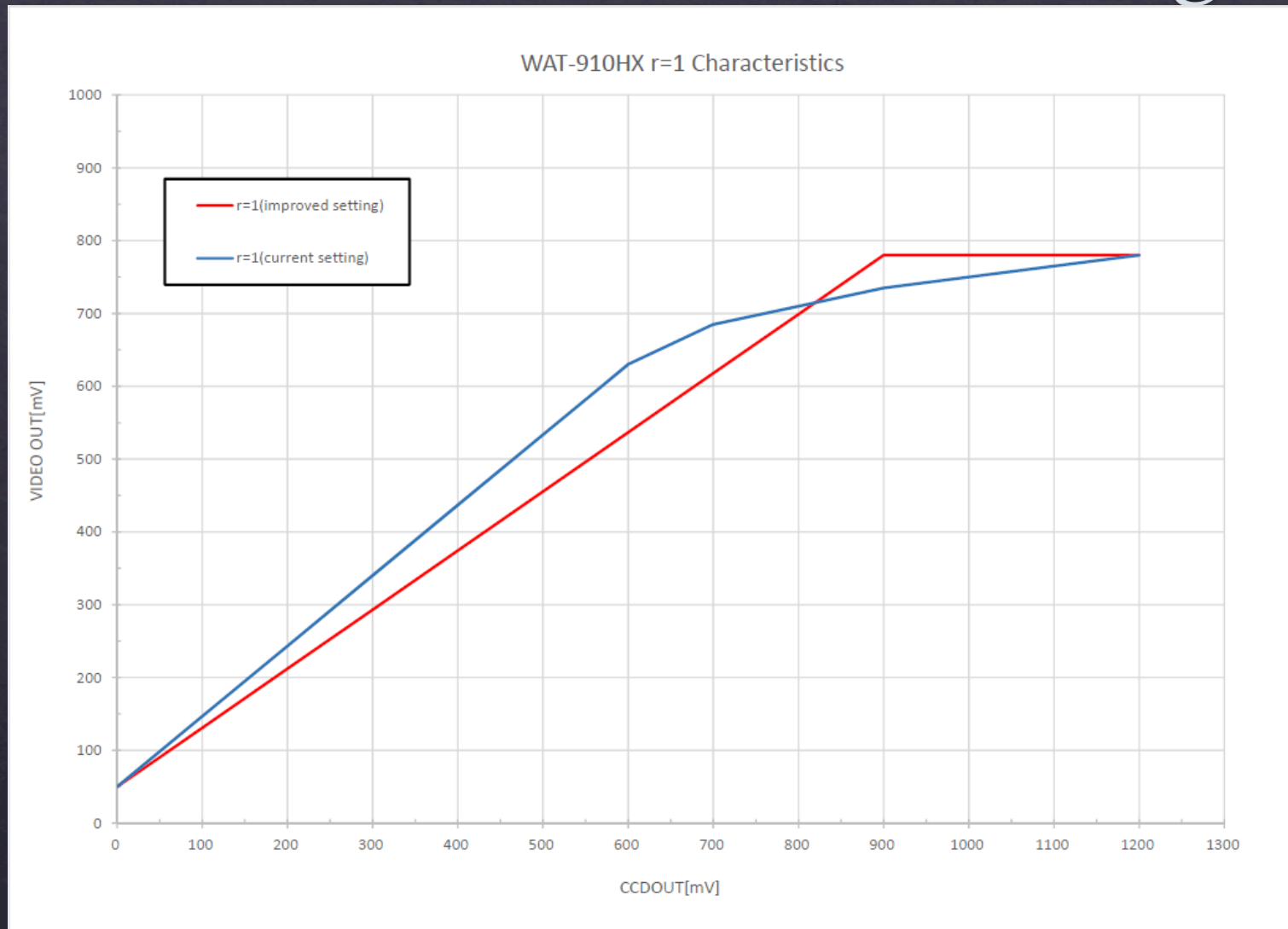
Lab Testing with ArtStar



Bob Anderson's ArtStar - sophisticated system for testing camera response and timing accuracy

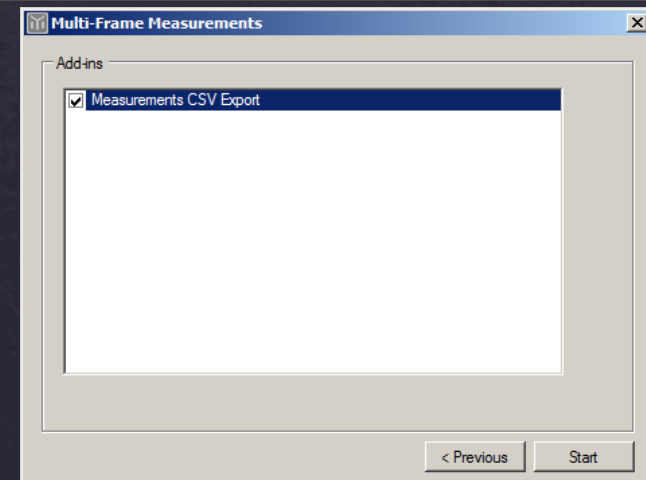
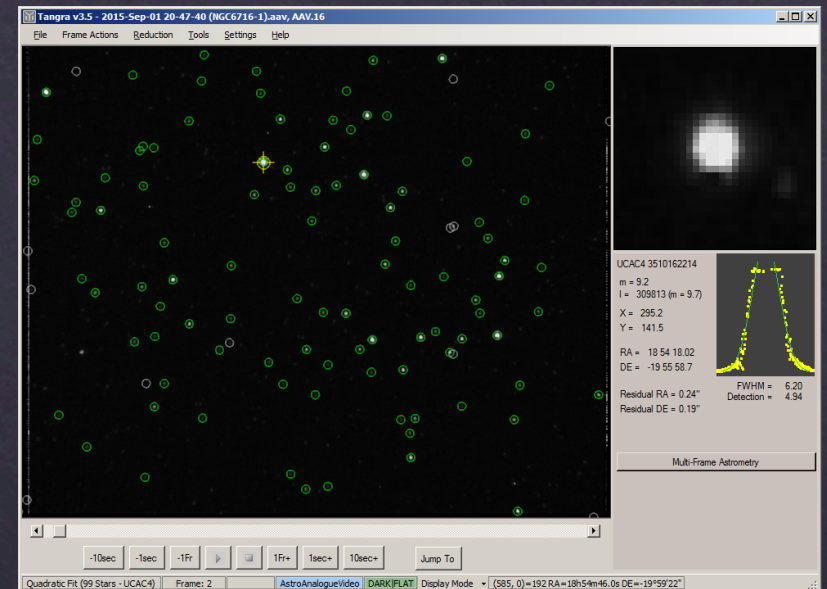
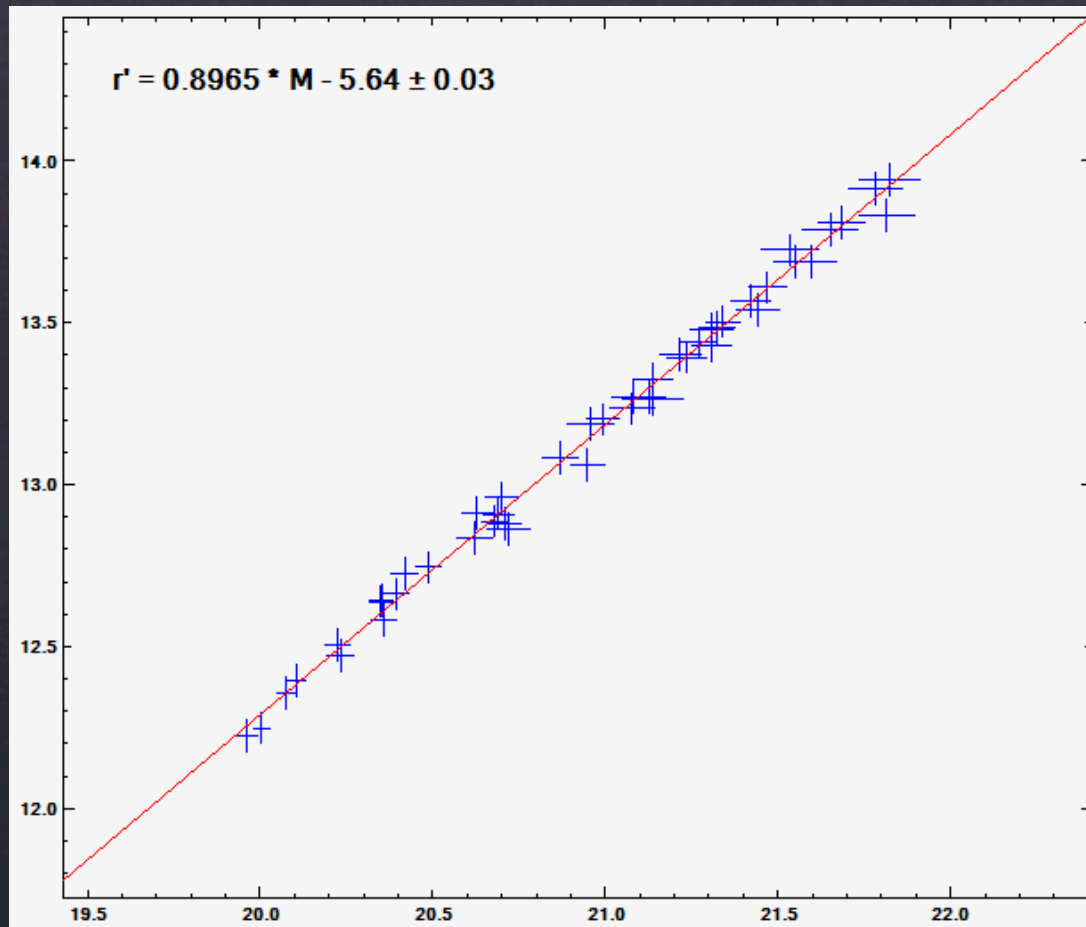
A more simplified version specialized for camera linearity testing only is being developed as well

WAT-910 Anti-Blooming



Anti-blooming was found (using ArtStar) to start around 65% for WAT-910HX cameras. Watec were quick to respond that linear response can be requested by customers upon new purchases. A correction for existing cameras has been implemented in Tangra during data reduction.

Star Field Linearity Test



Real star field test using open cluster NGC-6716

Questions

